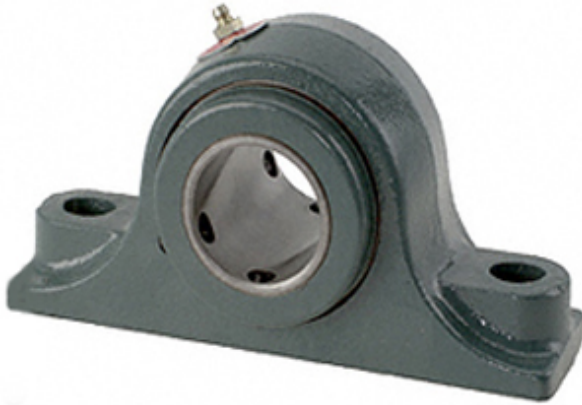




NTN Bearing Driveshaft do Brasil

2.438 Inch | 61.925 Millimeter x 4 Inch | 101.6 Millimeter x 2.75 Inch | 69.85 Millimeter DODGE P2B-E-207R Pillow Block Bearings



Bearing No. P2B-E-207R

P2B-E-207R Bearing 2D drawings and 3D CAD models

Category	Pillow Block Bearings
Inventory	20.0
Manufacturer Name	ABB MOTORS AND MECHANICAL INC
Minimum Buy Quantity	N/A
Weight	9.08
EAN	0782475696291
Product Group	M06288
Number of Mounting Holes	2
Mounting Method	Concentric Collar
Housing Style	2 Bolt Pillow Block
Rolling Element	Tapered Roller Bearing
Housing Material	Cast Iron
Expansion / Non-expansion	Non-expansion
Mounting Bolts	5/8 Inch
Relubricatable	Yes
Seals	Land Riding Rubbing Single Lip Contact
Housing Configuration	1 Piece Solid
Inch - Metric	Inch
Other Features	Double Row Optional E-Tect Seal Double Collar With Set Screw
Long Description	2 Bolt Pillow Block; 2-7/16" Bore; 2-3/4" Base to Center Height; Concentric Collar Mount; Tapered Roller



NTN Bearing Driveshaft do Brasil

	Bearing; 8-3/8" Minimum Bolt Spacing; 8-5/8" Bolt Spacing Maximum; Relubric
Category	Pillow Block
UNSPSC	31171511
Harmonized Tariff Code	8483.20.40.80
Noun	Bearing
Keyword String	Pillow Block
Manufacturer URL	http://www.dodge-pt.com
Manufacturer Item Number	P2B-E-207R TYPE E-XTRA
Manufacturer Internal Number	023013
Weight / LBS	20
d	2.438 Inch 61.925 Millimeter
Nominal Bolt Center to Center	8.5 Inch 215.5 Millimeter
B	2.75 Inch 69.85 Millimeter
D	4 Inch 101.6 Millimeter
Actual Bolt Center to Center	0 Inch 0Millimeter
Bolt Spacing Minimum	8.375 Inch 212.725Millimeter
Bolt Spacing Maximum	8.625 Inch 219.075Millimeter