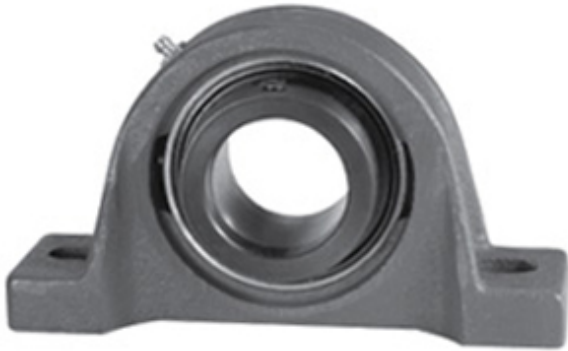




NTN Bearing Driveshaft do Brasil

1.438 Inch | 36.525 Millimeter x 2.016 Inch | 51.2 Millimeter x 1.875 Inch | 47.63 Millimeter LINK BELT P3Y223E3 Pillow Block Bearings



P3Y223E3 Bearing 2D drawings and 3D CAD models

Bearing No. P3Y223E3

Category	Pillow Block Bearings
Inventory	7.0
Manufacturer Name	REXNORD
Minimum Buy Quantity	N/A
Weight	1.66
EAN	0662327121792
Product Group	M06110
Number of Mounting Holes	2
Mounting Method	Eccentric Collar
Housing Style	2 Bolt Pillow Block
Rolling Element	Ball Bearing
Housing Material	Cast Iron
Expansion / Non-expansion	Non-expansion
Mounting Bolts	1/2 Inch
Relubricatable	Yes
Insert Part Number	YG223E3L
Seals	Triple Lip Contact
Housing Configuration	1 Piece Solid
Inch - Metric	Inch
Other Features	Single Row Standard Duty Standard Backing Wide Inner Race
Long Description	2 Bolt Pillow Block; 1-7/16" Bore; 1-7/8" Base to Center Height; Eccentric Collar Mount; Ball Bearing;



NTN Bearing Driveshaft do Brasil

	Relubricatable; Cast Iron; Triple Lip Contact; Non- expansion
Category	Pillow Block
UNSPSC	31171511
Harmonized Tariff Code	8483.20.40.40
Noun	Bearing
Keyword String	Pillow Block
Manufacturer URL	http://www.rexnord.com
Manufacturer Item Number	P3Y223E3
Manufacturer Internal Number	5812179
Weight / LBS	4
Bolt Spacing Maximum	0 Inch 0Millimeter
B	1.875 Inch 47.63 Millimeter
D	2.016 Inch 51.2 Millimeter
d	1.438 Inch 36.525 Millimeter
Nominal Bolt Center to Center	5 Inch 127 Millimeter
Bolt Spacing Minimum	0 Inch 0Millimeter
Actual Bolt Center to Center	4.9 Inch 125.4Millimeter