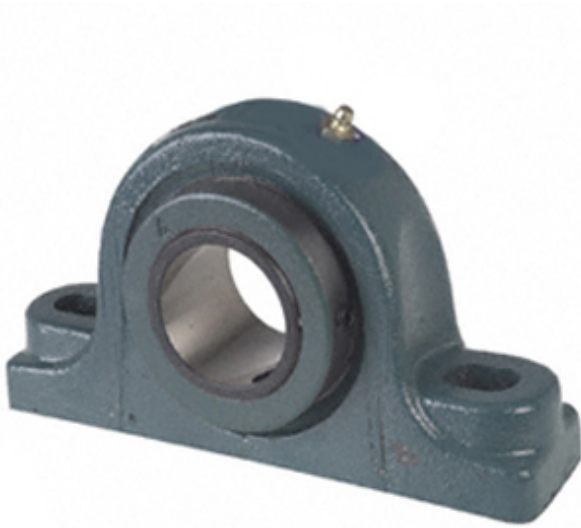




NTN Bearing Driveshaft do Brasil



2.938 Inch | 74.625 Millimeter x 2.453 Inch | 62.3 Millimeter x 3.25 Inch | 82.55 Millimeter DODGE P2B-UN2-215 Pillow Block Bearings

Bearing No. P2B-UN2-215

P2B-UN2-215 Bearing 2D drawings and 3D CAD models

Category	Pillow Block Bearings
Inventory	4.0
Manufacturer Name	ABB MOTORS AND MECHANICAL INC
Minimum Buy Quantity	N/A
Weight	7.718
EAN	0782475773220
Product Group	M06288
Number of Mounting Holes	2
Mounting Method	Concentric Collar
Housing Style	2 Bolt Pillow Block
Rolling Element	Spherical Roller Bearing
Housing Material	Cast Iron
Expansion / Non-expansion	Non-expansion
Mounting Bolts	3/4 Inch
Relubricatable	Yes
Insert Part Number	BRG-UN2-215
Seals	Single Lip Contact
Housing Configuration	1 Piece Solid
Inch - Metric	Inch
Other Features	Double Row With Set Screw
Long Description	2 Bolt Pillow Block; 2-15/16" Bore; 3-1/4" Base to Center Height; Concentric Collar Mount;



NTN Bearing Driveshaft do Brasil

	Spherical Roller Bearing; 7-13/16" Minimum Bolt Spacing; 8-7/16" Bolt Spacing Maximum; Re
Category	Pillow Block
UNSPSC	31171511
Harmonized Tariff Code	8483.20.40.80
Noun	Bearing
Keyword String	Pillow Block
Manufacturer URL	http://www.dodge-pt.com
Manufacturer Item Number	P2B-UN2-215 UNI-II
Manufacturer Internal Number	048011
Weight / LBS	18.2
Nominal Bolt Center to Center	8.1 Inch 206.4 Millimeter
Actual Bolt Center to Center	0 Inch 0Millimeter
Bolt Spacing Minimum	7.813 Inch 198.44Millimeter
D	2.453 Inch 62.3 Millimeter
Bolt Spacing Maximum	8.438 Inch 214.325Millimeter
d	2.938 Inch 74.625 Millimeter
B	3.25 Inch 82.55 Millimeter