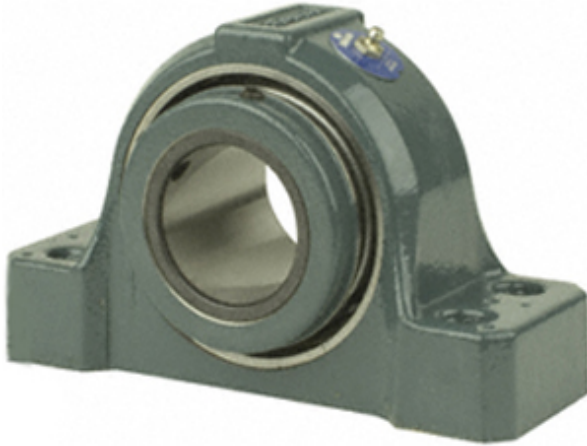




NTN Bearing Driveshaft do Brasil



4.438 Inch | 112.725 Millimeter x 6.531 Inch |
 165.887 Millimeter x 4.75 Inch | 120.65 Millimeter
 DODGE P4B-S2-407RE Pillow Block Bearings

Bearing No. P4B-S2-407RE

P4B-S2-407RE Bearing 2D drawings and 3D CAD models

Category	Pillow Block Bearings
Inventory	4.0
Manufacturer Name	ABB MOTORS AND MECHANICAL INC
Minimum Buy Quantity	N/A
Weight	38.59
EAN	0782475306237
Product Group	M06288
Number of Mounting Holes	4
Mounting Method	Concentric Collar
Housing Style	4 Bolt Pillow Block
Rolling Element	Spherical Roller Bearing
Housing Material	Cast Iron
Expansion / Non-expansion	Expansion
Mounting Bolts	3/4 Inch
Relubricatable	Yes
Insert Part Number	INS-S2-407R
Seals	Triple Lip Contact
Housing Configuration	1 Piece Solid
Inch - Metric	Inch
Other Features	Double Row Has Flinger With Set Screw
Long Description	4 Bolt Pillow Block; 4-7/16" Bore; 4-3/4" Base to Center Height; Concentric Collar Mount; Spherical Roller



NTN Bearing Driveshaft do Brasil

	Bearing; 13" Minimum Bolt Spacing; 14" Bolt Spacing Maximum; Relubricatab
Category	Pillow Block
UNSPSC	31171511
Harmonized Tariff Code	8483.20.40.80
Noun	Bearing
Keyword String	Pillow Block
Manufacturer URL	http://www.dodge-pt.com
Manufacturer Item Number	P4B-S2-407RE
Manufacturer Internal Number	070393
Weight / LBS	85
Actual Bolt Center to Center	0 Inch 0Millimeter
B	4.75 Inch 120.65 Millimeter
Bolt Spacing Minimum	13 Inch 330.2Millimeter
d	4.438 Inch 112.725 Millimeter
Bolt Spacing Maximum	14 Inch 355.6Millimeter
Nominal Bolt Center to Center	13.2 Inch 335.3 Millimeter
D	6.531 Inch 165.887 Millimeter