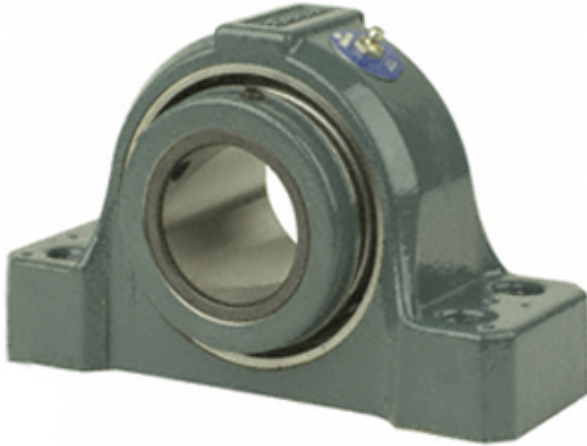




NTN Bearing Driveshaft do Brasil

3.938 Inch | 100.025 Millimeter x 4.469 Inch |
113.513 Millimeter x 4.25 Inch | 107.95 Millimeter
DODGE P4B-S2-315R Pillow Block Bearings



Bearing No. P4B-S2-315R

P4B-S2-315R Bearing 2D drawings and 3D CAD models

Category	Pillow Block Bearings
Inventory	4.0
Manufacturer Name	ABB MOTORS AND MECHANICAL INC
Minimum Buy Quantity	N/A
Weight	22.459
EAN	0782475306015
Product Group	M06288
Number of Mounting Holes	4
Mounting Method	Concentric Collar
Housing Style	4 Bolt Pillow Block
Rolling Element	Spherical Roller Bearing
Housing Material	Cast Iron
Expansion / Non-expansion	Non-expansion
Mounting Bolts	3/4 Inch
Relubricatable	Yes
Insert Part Number	INS-S2-315R
Seals	Triple Lip Contact
Housing Configuration	1 Piece Solid
Inch - Metric	Inch
Other Features	Double Row Has Flinger With Set Screw
Long Description	4 Bolt Pillow Block; 3-15/16" Bore; 4-1/4" Base to Center Height; Concentric Collar Mount;



NTN Bearing Driveshaft do Brasil

	Spherical Roller Bearing; 12-1/8" Minimum Bolt Spacing; 12-7/8" Bolt Spacing Maximum; Rel
Category	Pillow Block
UNSPSC	31171511
Harmonized Tariff Code	8483.20.40.80
Noun	Bearing
Keyword String	Pillow Block
Manufacturer URL	http://www.dodge-pt.com
Manufacturer Item Number	P4B-S2-315R
Manufacturer Internal Number	070373
Weight / LBS	49.47
Actual Bolt Center to Center	0 Inch 0Millimeter
B	4.25 Inch 107.95 Millimeter
d	3.938 Inch 100.025 Millimeter
D	4.469 Inch 113.513 Millimeter
Bolt Spacing Maximum	12.875 Inch 327.025Millimeter
Nominal Bolt Center to Center	12.5 Inch 317.5 Millimeter
Bolt Spacing Minimum	12.125 Inch 307.975Millimeter