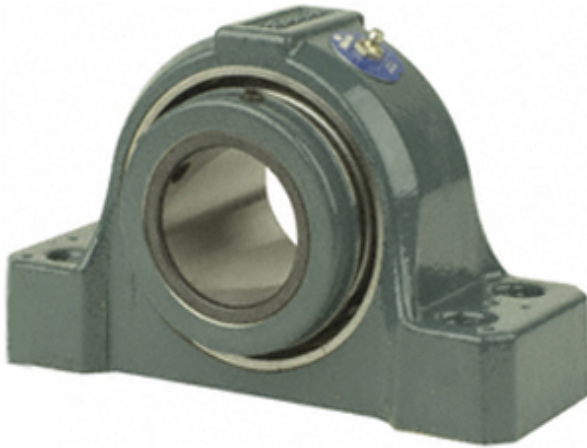




# NTN Bearing Driveshaft do Brasil

2.188 Inch | 55.575 Millimeter x 2.938 Inch |  
74.625 Millimeter x 2.5 Inch | 63.5 Millimeter  
DODGE P4B-S2-203R Pillow Block Bearings



Bearing No. P4B-S2-203R

P4B-S2-203R Bearing 2D drawings and 3D CAD models

Category	Pillow Block Bearings
Inventory	2.0
Manufacturer Name	ABB MOTORS AND MECHANICAL INC
Minimum Buy Quantity	N/A
Weight	5.689
EAN	0782475305964
Product Group	M06288
Number of Mounting Holes	4
Mounting Method	Concentric Collar
Housing Style	4 Bolt Pillow Block
Rolling Element	Spherical Roller Bearing
Housing Material	Cast Iron
Expansion / Non-expansion	Non-expansion
Mounting Bolts	1/2 Inch
Relubricatable	Yes
Insert Part Number	INS-S2-203R
Seals	Triple Lip Contact
Housing Configuration	1 Piece Solid
Inch - Metric	Inch
Other Features	Double Row   Has Flinger   With Set Screw
Long Description	4 Bolt Pillow Block; 2-3/16" Bore; 2-1/2" Base to Center Height; Concentric Collar Mount; Spherical Roller



## NTN Bearing Driveshaft do Brasil

	Bearing; 6-9/16" Minimum Bolt Spacing; 6-15/16" Bolt Spacing Maximum; Rel
Category	Pillow Block
UNSPSC	31171511
Harmonized Tariff Code	8483.20.40.80
Noun	Bearing
Keyword String	Pillow Block
Manufacturer URL	<a href="http://www.dodge-pt.com">http://www.dodge-pt.com</a>
Manufacturer Item Number	P4B-S2-203R
Manufacturer Internal Number	070363
Weight / LBS	12.53
B	2.5 Inch   63.5 Millimeter
Nominal Bolt Center to Center	6.8 Inch   171.5 Millimeter
D	2.938 Inch   74.625 Millimeter
d	2.188 Inch   55.575 Millimeter
Bolt Spacing Minimum	6.563 Inch   166.7Millimeter
Bolt Spacing Maximum	6.938 Inch   176.225Millimeter
Actual Bolt Center to Center	0 Inch   0Millimeter